

# 7-050 Quarter-Turn Pr14.1 L13.5

Tool operable, IP65, Stainless Steel, Optional pre-assembly

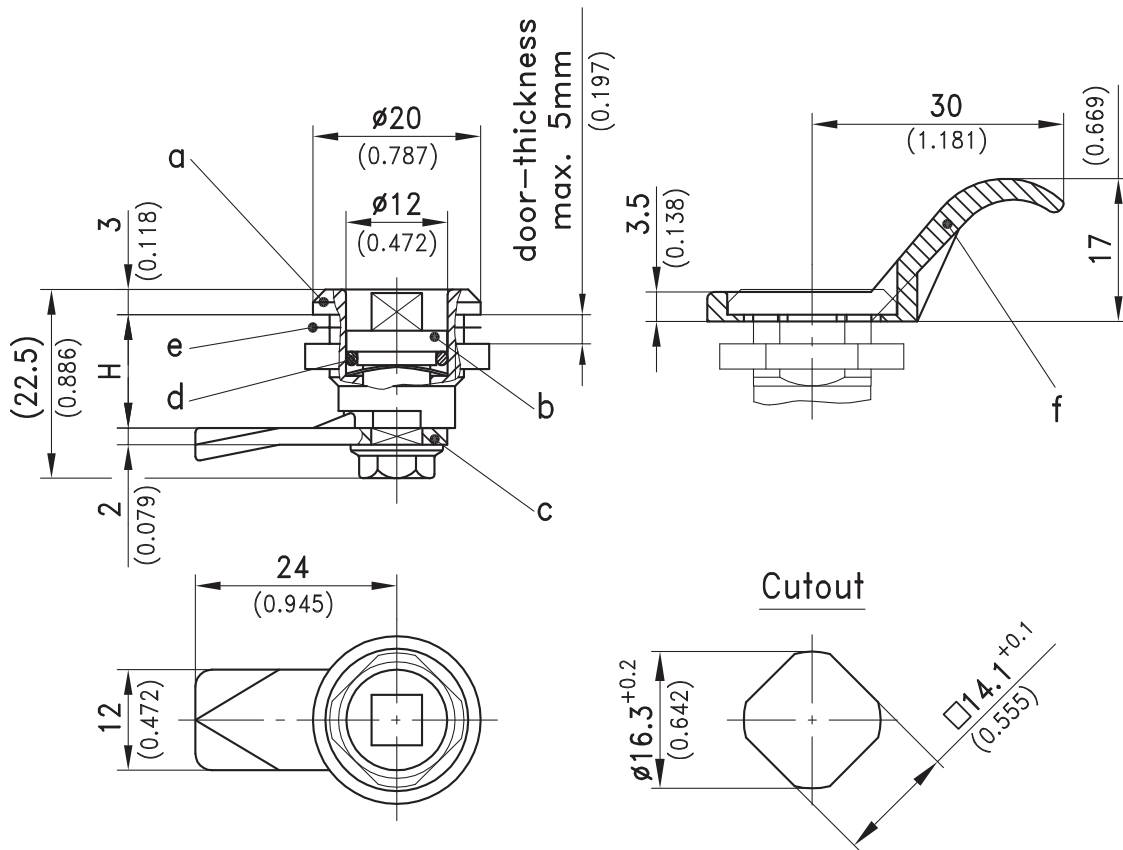


## Product Notes:

- Quarter-Turn consists of three components which are combined to fit application
- Components can be pre-assembled by DIRAK upon request
- Pre-assembled Quarter-Turn can be installed in cutout
- RH and LH application
- Finger pull available - see Product System 1-060
- Zinc die or PA - see Product System 1-050

## Material:

- **Housing, insert, screw, serrated washer, wave washer and cam:** Stainless Steel AISI 316
- **Key:** Zinc Die
- **Finger pull:** PA, Black



		Key (zinc die)	See Page
a) Housing with nut	220-9018		
b) Insert with screw, serrated washer and wave washer			
Triangular 6.5mm	220-9121	204-0112	
Square 6mm	220-9120	204-0111	
Slotted 1.5mm	220-9122		
c) Cam - H in mm			
7.5	220-0503.04		
13.5	220-0501.04		
19.5	220-0502.04		
<b>Optional:</b>			
<b>Water and dust-tight according to IP65 DIN EN 60529 by:</b>			
d) O-Ring 9.1x1.6mm	220-0601		
e) Flat external seal	220-0701		
f) Finger pull	220-1301		01.14
<b>When using finger pull the H dimension decreases by 0.8mm.</b>			
g) Assembling without O-ring	220-0001		
Assembling with O-ring	220-0002		